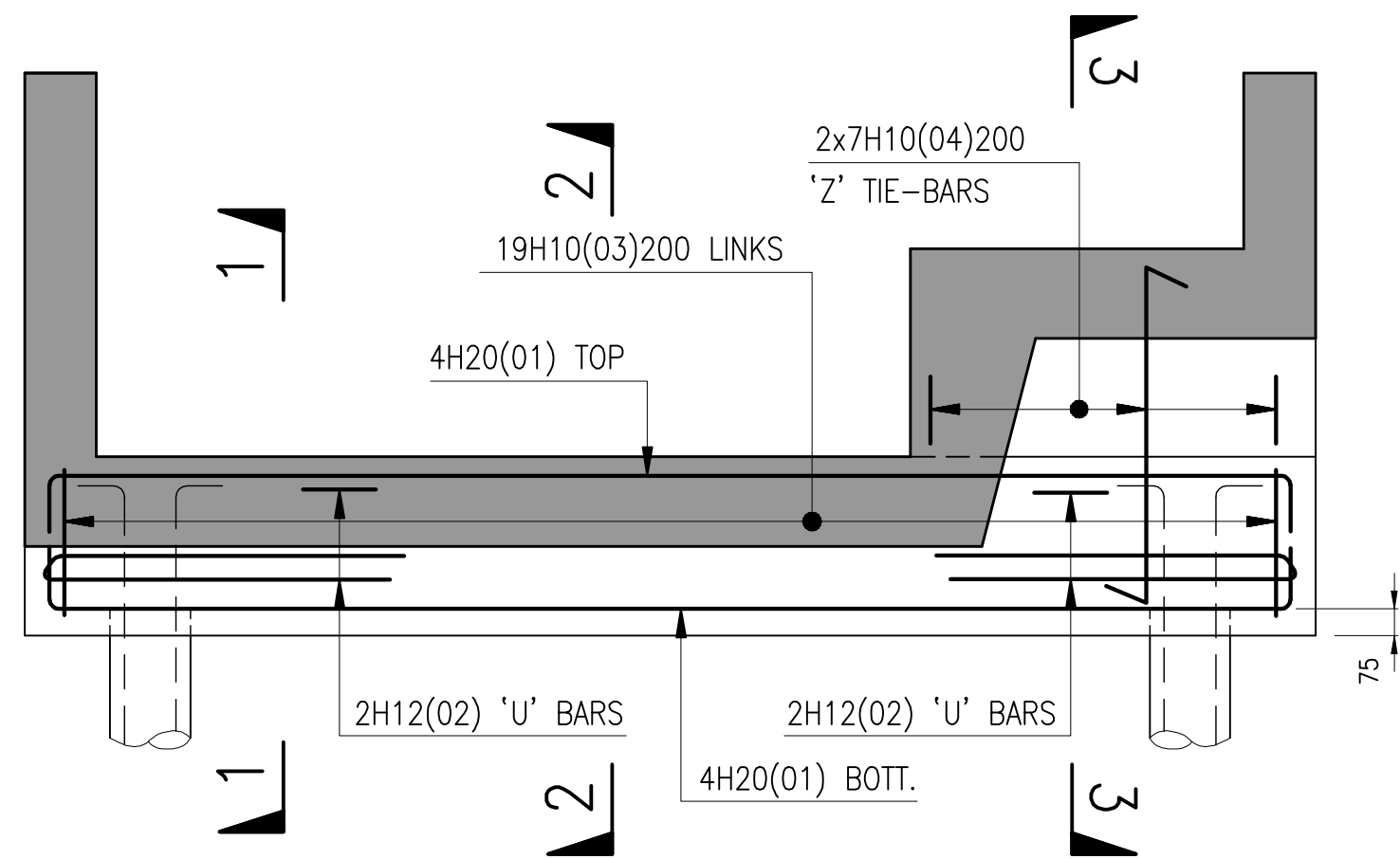
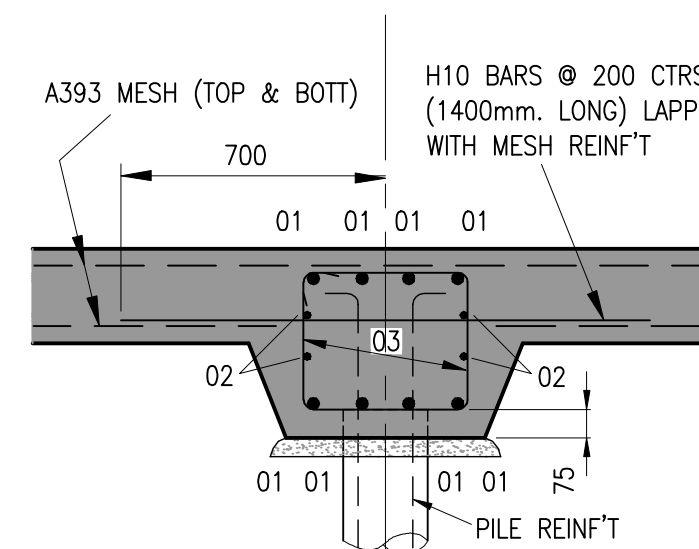


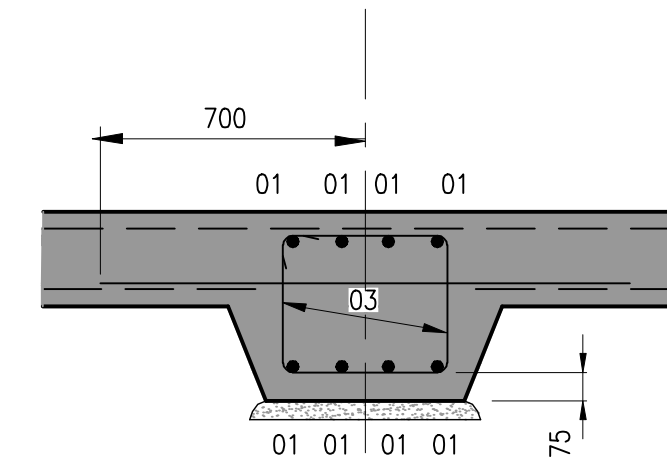
ELEVATION ON GROUND BEAM/PILE CAP TYPE 'A'
(9 No. TOTAL)
1:20



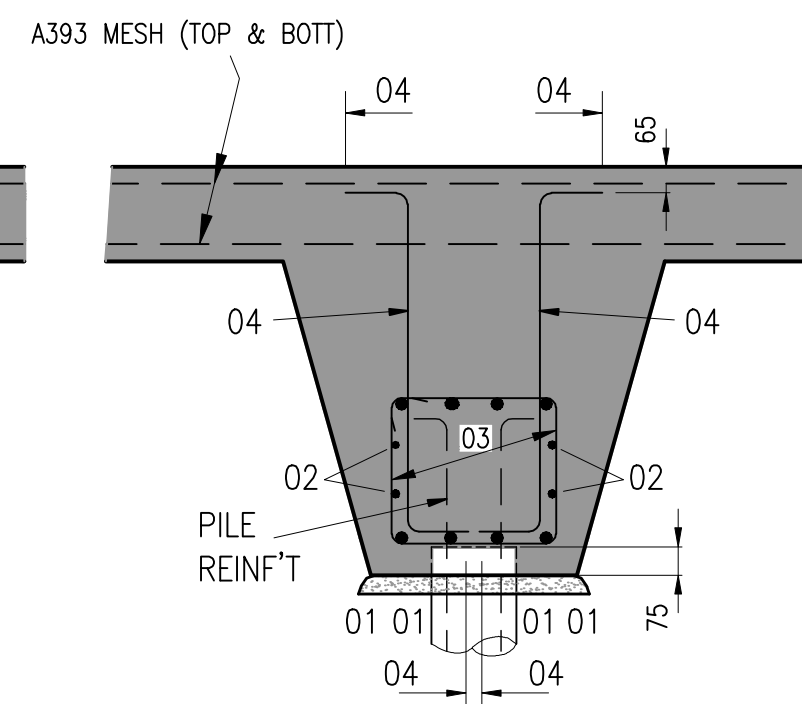
ELEVATION ON GROUND BEAM/PILE CAP TYPE 'B'
(2 No. TOTAL)
1:20



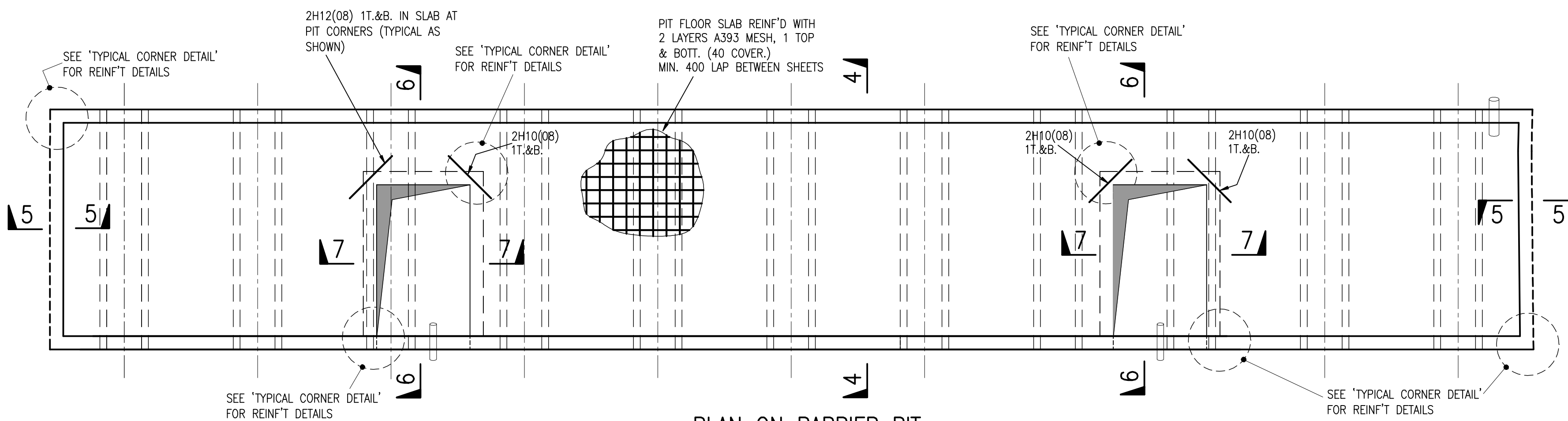
SECTION 1-1
1:20



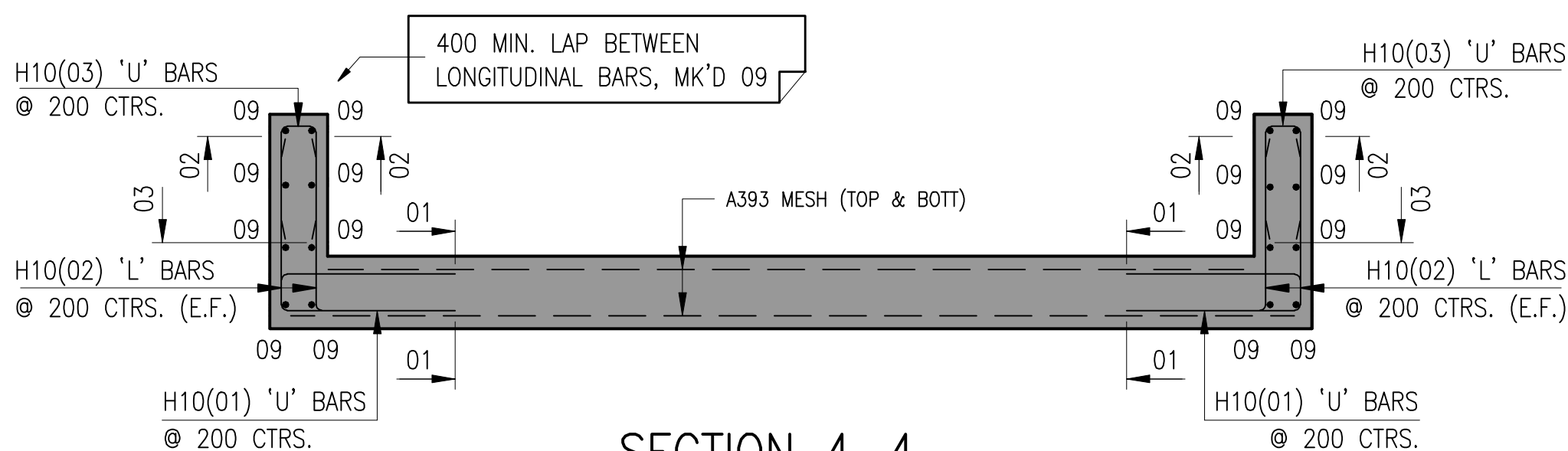
SECTION 2-2
1:20



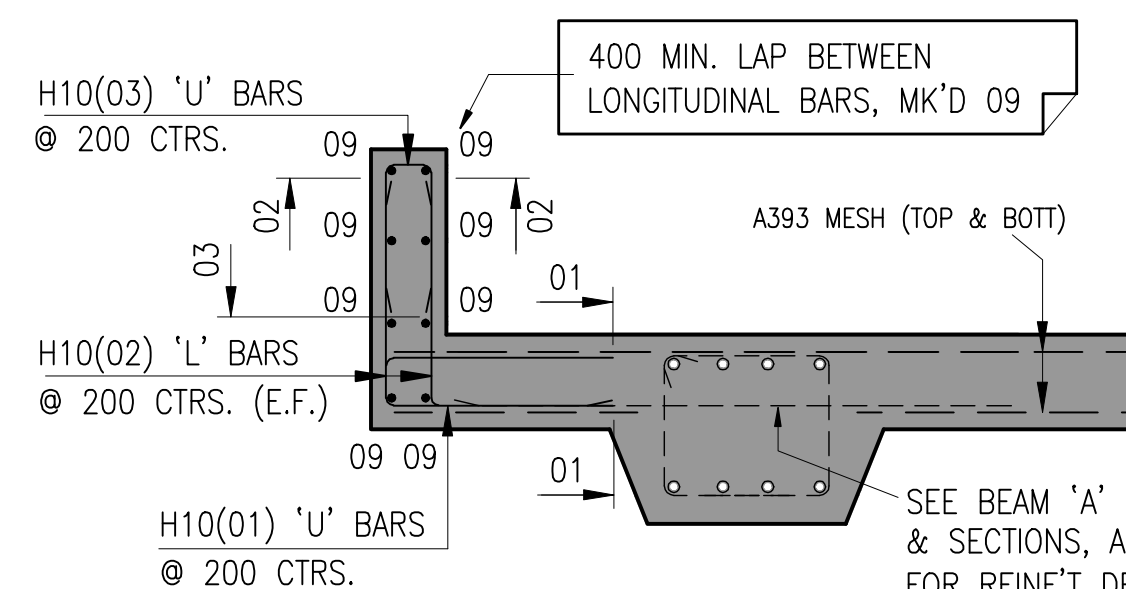
SECTION 3-3
1:20



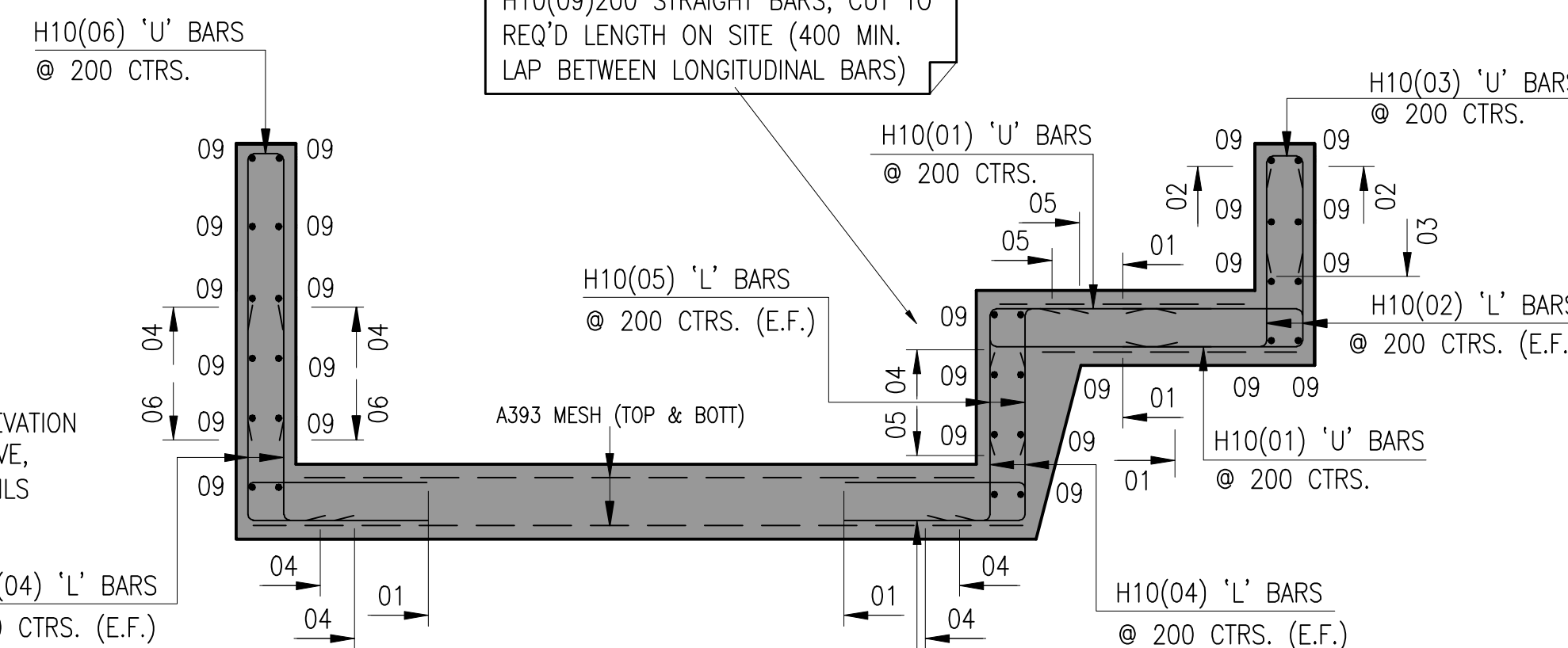
PLAN ON BARRIER PIT
1:50



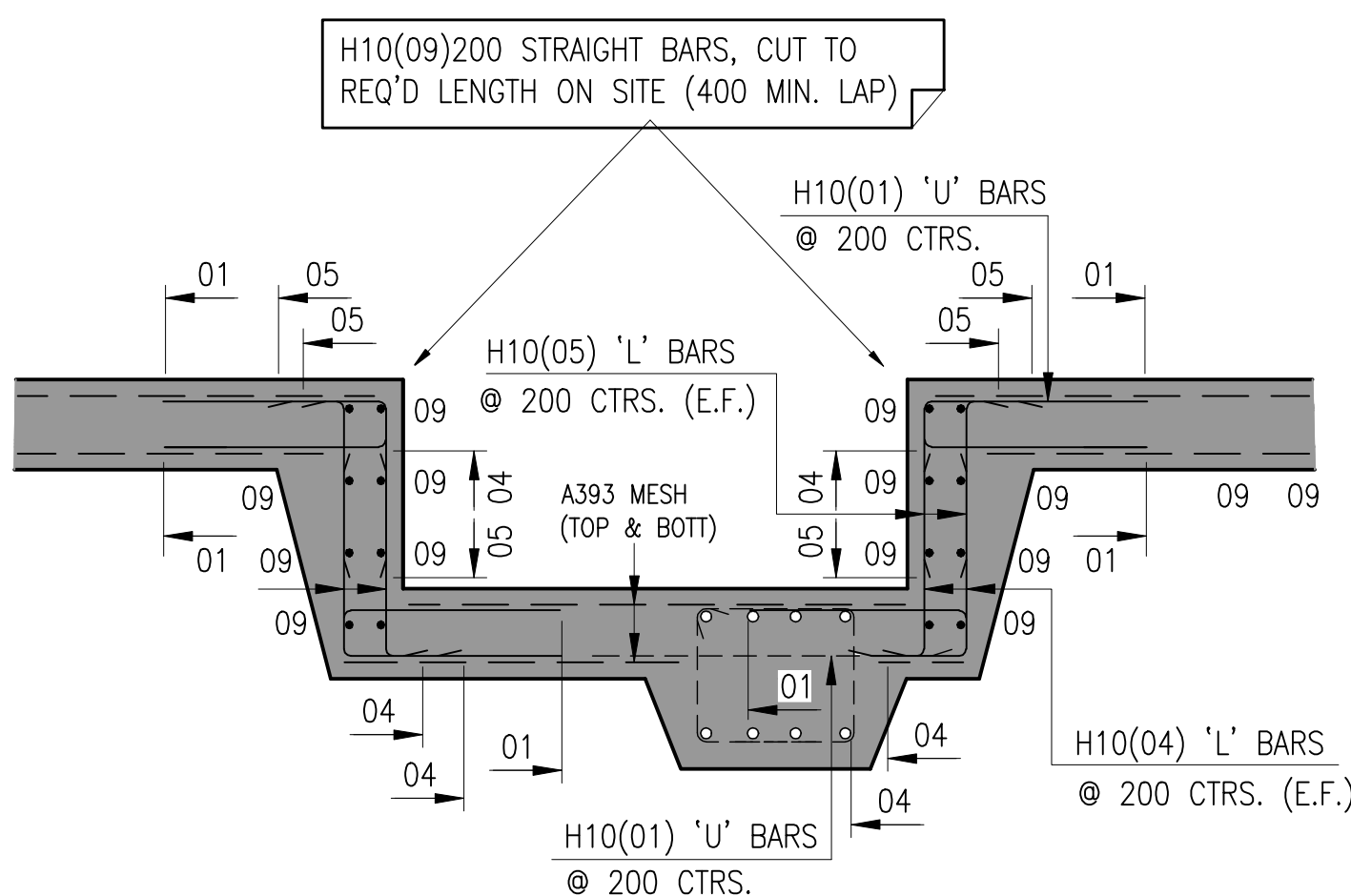
SECTION 4-4
1:20



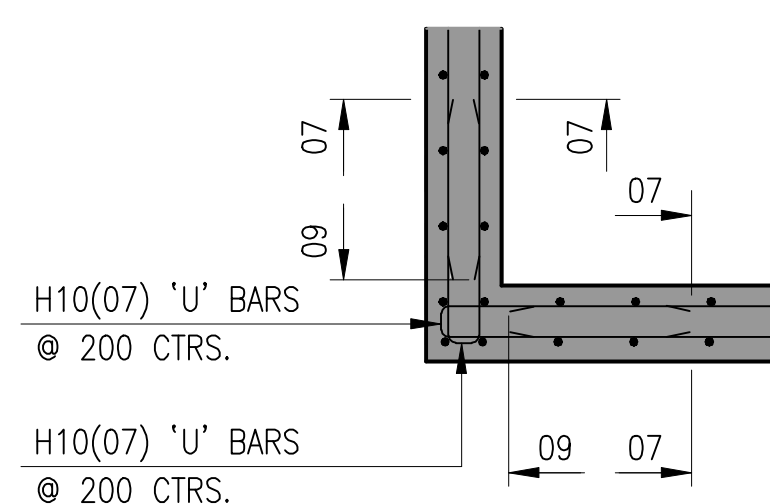
SECTION 5-5
1:20



SECTION 6-6
1:20



SECTION 7-7
1:20



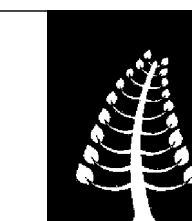
TYPICAL CORNER DETAIL
1:20

NOTES.

CONCRETE NOTES:

- ALL MATERIALS AND WORKMANSHIP TO COMPLY WITH SEJC CONSULTING ENGINEERS STANDARD SPECIFICATION FOR REINFORCED CONCRETE AND ALL RELEVANT BRITISH STANDARDS
- THIS DRAWING TO BE READ IN CONJUNCTION WITH ALL RELEVANT ARCHITECTS AND SEJC CONSULTING ENGINEERS DRAWINGS
- FOR DETAILS OF CONCRETE MIX REFER TO SEJC STANDARD CONCRETE SPECIFICATION
- ALL CONCRETE TO BE VIBRATED IN ACCORDANCE WITH SEJC CONSULTING ENGINEERS STANDARD SPECIFICATION FOR REINFORCED CONCRETE
- REINFORCEMENT SHOWN IS SCHEDULED ON BAR LIST(S) 501180/20-318 - 01& 02
- CONCRETE COVER TO REINFORCEMENT 40mm, UNLESS NOTED OTHERWISE
- ABBREVIATIONS:
H(12) DENOTES HIGH YIELD TYPE 2 BARS
R DENOTES MILD STEEL ROUND BARS
AB ALTERNATE BARS
ABR ALTERNATE BARS REVERSED
ABS ALTERNATE BARS STAGGERED
NF NEAR FACE
FF FAR FACE
EF EACH FACE
T TOP FACE
B BOTTOM FACE
- ALL REINFORCEMENT TO BE HIGH YIELD TYPE B500A, B500B OR B500C RIBBED BARS TO BS4449:2005
BENDING AND SCHEDULING OF REINFORCEMENT TO BE IN ACCORDANCE WITH BS 8666:2005

MK	REVISIONS	BY	DATE	CHK
STATUS:—				
AS BUILT				
DRAWN BY: <u>SH</u> DATE: <u>NOV/07</u>				
CHECKED BY: _____ DATE: _____				
PROJECT ENGINEER: _____ DATE: _____				
CLIENT				
CTP & JAMES				
PROJECT				
WAKEFIELD WATERFRONT				
BUILDING 20				



SEJC Consulting Engineers
Consulting Structural & Civil Engineers

Sanderson House, Station Road, Horsforth, Leeds LS18 5NT
Telephone 0113 2590090 Fax 0113 2586640

TITLE		FLOOD BARRIER TYPE 'B' FOUNDATION & PIT RC. DETAILS	
SCALES		AS SHOWN (A1)	
CONTRACT No	DRG No		
501180C	20-318		